



CITY OF LOS ANGELES DEPARTMENT OF RECREATION & PARKS
MAR VISTA RECREATION CENTER
 11430 WOODBINE STREET, LA, CA 90066
 (310) 398-5982 / MARVISTA.RECREATIONCENTER@LACITY.ORG



2024 WINTER YOUTH CO-REC BASKETBALL



LEAGUE FEE: \$175

FIRST LEAGUE GAME: SATURDAY, JANUARY 13

PRACTICES TENTATIVELY BEGIN: WEEK OF JANUARY 1

MANDATORY EVALUATIONS: SUNDAY, DECEMBER 10

(Evaluation Times are listed below. If unable to attend, please attend make-up evaluations.)

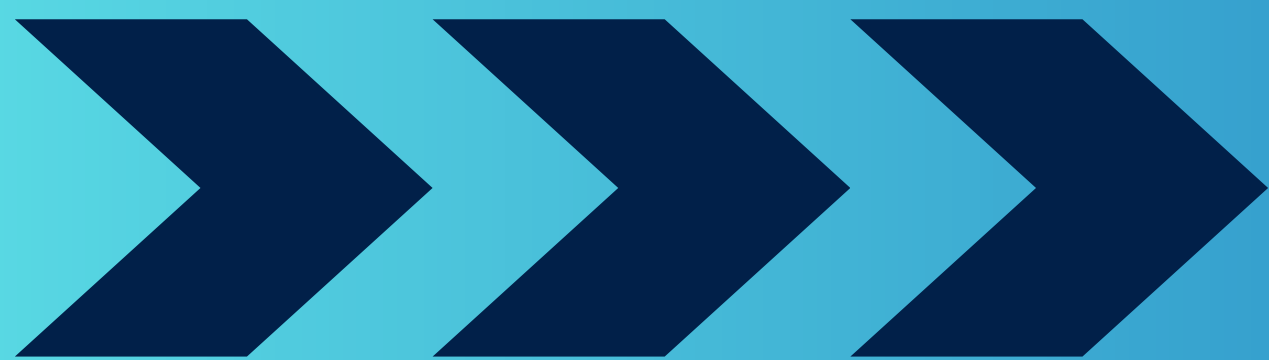
MAKE-UP EVALUATIONS: SUNDAY, DECEMBER 17

<u>DIVISION</u>	<u>YEAR BORN</u>	<u>EVALUATION TIME</u>
LIL' DRIBBLERS	2017-2018	NO EVALUATION
ROOKIES.	2015-2016	9:00AM or 10:00AM*
MINORS	2013-2014	11:00AM or 12:00PM*
MAJORS	2011-2012	1:00PM or 2:00PM*
JUNIORS	2008-2010	3:00PM

**Evaluations will be split into two sessions by last name.*



REGISTER ONLINE:



LAPARKS.ORG/RECCENTER/MAR-VISTA

REGISTRATION STARTS: NOVEMBER 1 @ 10:00AM
 REGISTER ONLINE: REG.LAPARKS.ORG OR
 SCAN QR CODE ABOVE.

AFTER COMPLETING ONLINE REGISTRATION, PLEASE
 FILL OUT THE PAPER SPORTS REGISTRATION FORM
 AND SUBMIT IT TO THE REC CENTER OFFICE.



Achieving gender equity through a continuous commitment to girls and women in sports.

Persons with disabilities are welcome to participate in our programs. Reasonable accommodations will be made prior to arrangements. Programs subject to change or cancellation without notice.

PlayLA Youth and Adaptive Youth Sports Program is made possible by the LA28 Olympic and Paralympic Games.

Waivers available for those who qualify, ask for details.



MAR VISTA RECREATION CENTER

MVRC WINTER BASKETBALL

LEAGUE INFORMATION



Thank you for your interest in signing up your child(ren) for one of our Recreation Center's Sports Leagues. Please read below for more information to help make your enrollment as smooth as possible. By enrolling in our leagues, your child will receive a uniform, and an award at the conclusion of the season. All leagues will run for 9 weeks unless noted otherwise. Our leagues are open to all skill levels. Volunteer coaches will help build each player's fundamental skills while also working on team play in a weekly practice. It is a rewarding experience that only requires a few hours a week. Ask the office for more information on how to become a volunteer.

EVALUATIONS + REQUESTS

EVALUATIONS: IT IS MANDATORY THAT ALL PLAYERS ATTEND EVALUATIONS. COACHES AND STAFF WILL EVALUATE PLAYERS. THE PURPOSE IS TO EVALUATE PLAYERS IN ORDER TO ESTABLISH FAIR AND BALANCED TEAMS. IF YOU REGISTER LATE, YOU MUST ATTEND MAKE-UP EVALUATIONS.
CARPPOOL, SIBLINGS & REQUESTING A COACH: CARPOOL REQUESTS WILL NOT BE ACCEPTED. SIBLINGS WILL BE PLACED ON THE SAME TEAM UNLESS OTHERWISE REQUESTED. PLAYERS MAY NOT REQUEST A SPECIFIC COACH. PLAYERS ARE DRAFTED AND ARE NOT GUARANTEED TO BE PLACED ON ANY SPECIFIC TEAM.

ALL-STARS + SELECTION PROCESS

IN ORDER TO BE ELIGIBLE FOR ALL-STARS, YOUR CHILD MUST BE SIGNED UP IN THEIR APPROPRIATE AGE DIVISION. IF THE PLAY UP, THEY WILL NOT BE ELIGIBLE FOR OTHER DIVISIONS.

HALFWAY THROUGH THE SEASON - COACHES & STAFF WILL NOMINATE PLAYERS BASED ON THEIR PERFORMANCE AND ATTENDANCE THROUGHOUT THE SEASON.
MVRC HAS THE FINAL SAY ON WHO GETS SELECTED.
AN ALL-STAR TOURNAMENT WILL BE HELD AT THE COMPLETION OF THE SEASON AGAINST OTHER LA CITY PARKS.

PRACTICES & GAMES + GENERAL INFORMATION

PRACTICES: AT THIS TIME, IT IS NOT KNOWN WHICH DAYS OR TIMES YOUR CHILD'S TEAM WILL PRACTICE. WEEKDAY PRACTICES ARE TYPICALLY SCHEDULED BETWEEN 4PM AND 9PM. REFUNDS WILL NOT BE ISSUED IF YOUR CHILD CANNOT MAKE PRACTICES.

GAMES: THE START OF THE SEASON IS TENTATIVELY SCHEDULED FOR JANUARY 1, 2023. TEAMS WILL USUALLY PLAY ONE GAME PER WEEK. OCCASIONALLY THERE ARE WEEK-DAY OR WEEKEND GAMES AND/OR 2 GAMES PER WEEK. GAME TIMES ON WEEKDAYS ARE USUALLY BETWEEN 5PM AND 9PM. SATURDAY GAME TIMES ARE BETWEEN 8AM AND 8PM. ALL GIRLS DIVISIONS WILL PLAY ON SATURDAYS. LEAGUE IS TENTATIVELY SCHEDULED TO END MARCH 2, 2023

GENERAL INFORMATION: YOUR CHILD'S COACH WILL BE CONTACTING YOU. IF YOU DO NOT RECEIVE A CALL OR EMAIL BEFORE MONDAY, JANUARY 2, PLEASE CALL THE RECREATION CENTER. PLEASE DO NOT CALL THE CENTER PRIOR TO THAT DATE REGARDING YOUR CHILD'S PRACTICE. WE WOULD LIKE TO GIVE YOUR COACH THE OPPORTUNITY TO SPEAK TO YOU FIRST. YOUR COACH WILL HOLD A PARENT MEETING AND GIVE YOU ALL THE INFORMATION REGARDING YOUR CHILD'S TEAM AND PRACTICE TIMES. PLEASE REMEMBER ALL COACHES ARE VOLUNTEERS AND WITHOUT THEM YOUR CHILD WOULD NOT BE ABLE TO PARTICIPATE.

REFUND POLICY

YOU MAY REQUEST A REFUND BEFORE THE PROGRAM'S SCHEDULED FIRST DAY. A 20% ADMINISTRATIVE FEE WILL BE ASSESSED FOR ANY PATRON GRANTED A REFUND. FULL REFUNDS WILL NOT BE ISSUED UNLESS A CLASS OR SPORTS LEAGUE IS CANCELLED BY THE RECREATION CENTER. THERE WILL BE NO REFUNDS NOR CREDITS AFTER THE PROGRAM HAS BEGUN UNLESS A CLASS OR SPORTS LEAGUE IS CHANGED OR CANCELLED BY THE RECREATION CENTER. GPLA REGISTRATION IS NON-REFUNDABLE. PLEASE ALLOW 6-8 WEEKS FOR THE PROCESSING OF ALL REFUND REQUESTS



CITY OF LOS ANGELES DEPARTMENT OF RECREATION & PARKS
MAR VISTA RECREATION CENTER
 11430 WOODBINE STREET, LA, CA 90066
 (310) 398-5982 / MARVISTA.RECREATIONCENTER@LACITY.ORG



2024 WINTER YOUTH GIRLS BASKETBALL



LEAGUE FEE: \$175

FIRST LEAGUE GAME: SATURDAY, JANUARY 13

PRACTICES TENTATIVELY BEGIN: WEEK OF JANUARY 1

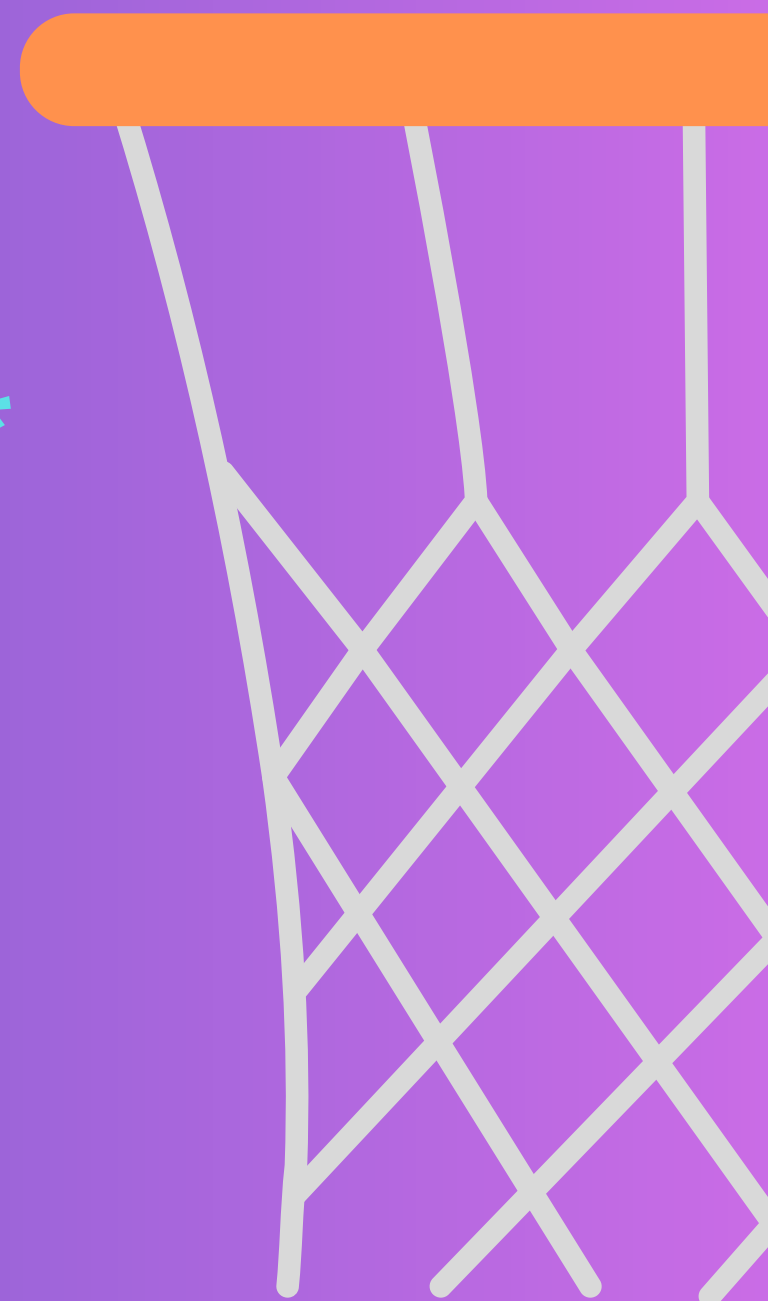
MANDATORY EVALUATIONS: SATURDAY, DECEMBER 9

(Evaluation Times are listed below. If unable to attend, please attend make-up evaluations.)

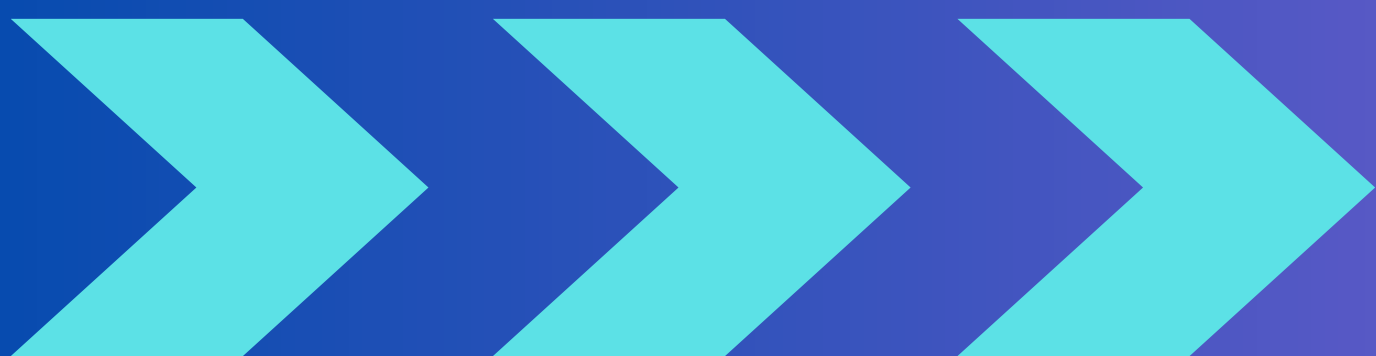
MAKE-UP EVALUATIONS: SATURDAY, DECEMBER 16

<u>DIVISION</u>	<u>YEAR BORN</u>	<u>EVALUATION TIME</u>
ROOKIES	2015-2016	9:00AM
MINORS	2013-2014	10:00AM or 11:00AM*
MAJORS/JRS	2009-2012	12:00PM

**Evaluations will be split into two sessions by last name.*



REGISTER ONLINE:



LAPARKS.ORG/RECCENTER/MAR-VISTA

REGISTRATION STARTS: NOVEMBER 1 @ 10:00AM
 REGISTER ONLINE: REG.LAPARKS.ORG OR
 SCAN QR CODE ABOVE.

AFTER COMPLETING ONLINE REGISTRATION, PLEASE
 FILL OUT THE PAPER SPORTS REGISTRATION FORM
 AND SUBMIT IT TO THE REC CENTER OFFICE.



Achieving gender equity through a continuous commitment to girls and women in sports.

Persons with disabilities are welcome to participate in our programs. Reasonable accommodations will be made prior to arrangements. Programs subject to change or cancellation without notice.

PlayLA Youth and Adaptive Youth Sports Program is made possible by the LA28 Olympic and Paralympic Games.

Waivers available for those who qualify, ask for details.



MAR VISTA RECREATION CENTER MVRC WINTER BASKETBALL

LEAGUE INFORMATION



Thank you for your interest in signing up your child(ren) for one of our Recreation Center's Sports Leagues. Please read below for more information to help make your enrollment as smooth as possible. By enrolling in our leagues, your child will receive a uniform, and an award at the conclusion of the season. All leagues will run for 9 weeks unless noted otherwise. Our leagues are open to all skill levels. Volunteer coaches will help build each player's fundamental skills while also working on team play in a weekly practice. It is a rewarding experience that only requires a few hours a week. Ask the office for more information on how to become a volunteer.

EVALUATIONS + REQUESTS

EVALUATIONS: IT IS MANDATORY THAT ALL PLAYERS ATTEND EVALUATIONS. COACHES AND STAFF WILL EVALUATE PLAYERS. THE PURPOSE IS TO EVALUATE PLAYERS IN ORDER TO ESTABLISH FAIR AND BALANCED TEAMS. IF YOU REGISTER LATE, YOU MUST ATTEND MAKE-UP EVALUATIONS.

CARPPOOL, SIBLINGS & REQUESTING A COACH: CARPOOL REQUESTS WILL NOT BE ACCEPTED. SIBLINGS WILL BE PLACED ON THE SAME TEAM UNLESS OTHERWISE REQUESTED. PLAYERS MAY NOT REQUEST A SPECIFIC COACH. PLAYERS ARE DRAFTED AND ARE NOT GUARANTEED TO BE PLACED ON ANY SPECIFIC TEAM.

ALL-STARS + SELECTION PROCESS

IN ORDER TO BE ELIGIBLE FOR ALL-STARS, YOUR CHILD MUST BE SIGNED UP IN THEIR APPROPRIATE AGE DIVISION. IF THE PLAY UP, THEY WILL NOT BE ELIGIBLE FOR OTHER DIVISIONS.

HALFWAY THROUGH THE SEASON - COACHES & STAFF WILL NOMINATE PLAYERS BASED ON THEIR PERFORMANCE AND ATTENDANCE THROUGHOUT THE SEASON.

MVRC HAS THE FINAL SAY ON WHO GETS SELECTED. AN ALL-STAR TOURNAMENT WILL BE HELD AT THE COMPLETION OF THE SEASON AGAINST OTHER LA CITY PARKS.

PRACTICES & GAMES + GENERAL INFORMATION

PRACTICES: AT THIS TIME, IT IS NOT KNOWN WHICH DAYS OR TIMES YOUR CHILD'S TEAM WILL PRACTICE. WEEKDAY PRACTICES ARE TYPICALLY SCHEDULED BETWEEN 4PM AND 9PM. REFUNDS WILL NOT BE ISSUED IF YOUR CHILD CANNOT MAKE PRACTICES.

GAMES: THE START OF THE SEASON IS TENTATIVELY SCHEDULED FOR JANUARY 1, 2023. TEAMS WILL USUALLY PLAY ONE GAME PER WEEK. OCCASIONALLY THERE ARE WEEK-DAY OR WEEKEND GAMES AND/OR 2 GAMES PER WEEK. GAME TIMES ON WEEKDAYS ARE USUALLY BETWEEN 5PM AND 9PM. SATURDAY GAME TIMES ARE BETWEEN 8AM AND 8PM. ALL GIRLS DIVISIONS WILL PLAY ON SATURDAYS. LEAGUE IS TENTATIVELY SCHEDULED TO END MARCH 2, 2023

GENERAL INFORMATION: YOUR CHILD'S COACH WILL BE CONTACTING YOU. IF YOU DO NOT RECEIVE A CALL OR EMAIL BEFORE MONDAY, JANUARY 2, PLEASE CALL THE RECREATION CENTER. PLEASE DO NOT CALL THE CENTER PRIOR TO THAT DATE REGARDING YOUR CHILD'S PRACTICE. WE WOULD LIKE TO GIVE YOUR COACH THE OPPORTUNITY TO SPEAK TO YOU FIRST. YOUR COACH WILL HOLD A PARENT MEETING AND GIVE YOU ALL THE INFORMATION REGARDING YOUR CHILD'S TEAM AND PRACTICE TIMES. PLEASE REMEMBER ALL COACHES ARE VOLUNTEERS AND WITHOUT THEM YOUR CHILD WOULD NOT BE ABLE TO PARTICIPATE.

REFUND POLICY

YOU MAY REQUEST A REFUND BEFORE THE PROGRAM'S SCHEDULED FIRST DAY. A 20% ADMINISTRATIVE FEE WILL BE ASSESSED FOR ANY PATRON GRANTED A REFUND. FULL REFUNDS WILL NOT BE ISSUED UNLESS A CLASS OR SPORTS LEAGUE IS CANCELLED BY THE RECREATION CENTER. THERE WILL BE NO REFUNDS NOR CREDITS AFTER THE PROGRAM HAS BEGUN UNLESS A CLASS OR SPORTS LEAGUE IS CHANGED OR CANCELLED BY THE RECREATION CENTER. GPLA REGISTRATION IS NON-REFUNDABLE. PLEASE ALLOW 6-8 WEEKS FOR THE PROCESSING OF ALL REFUND REQUESTS